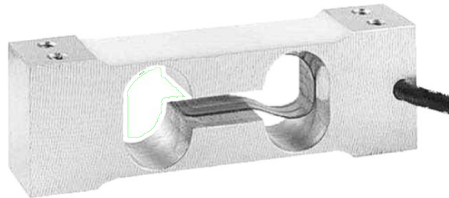
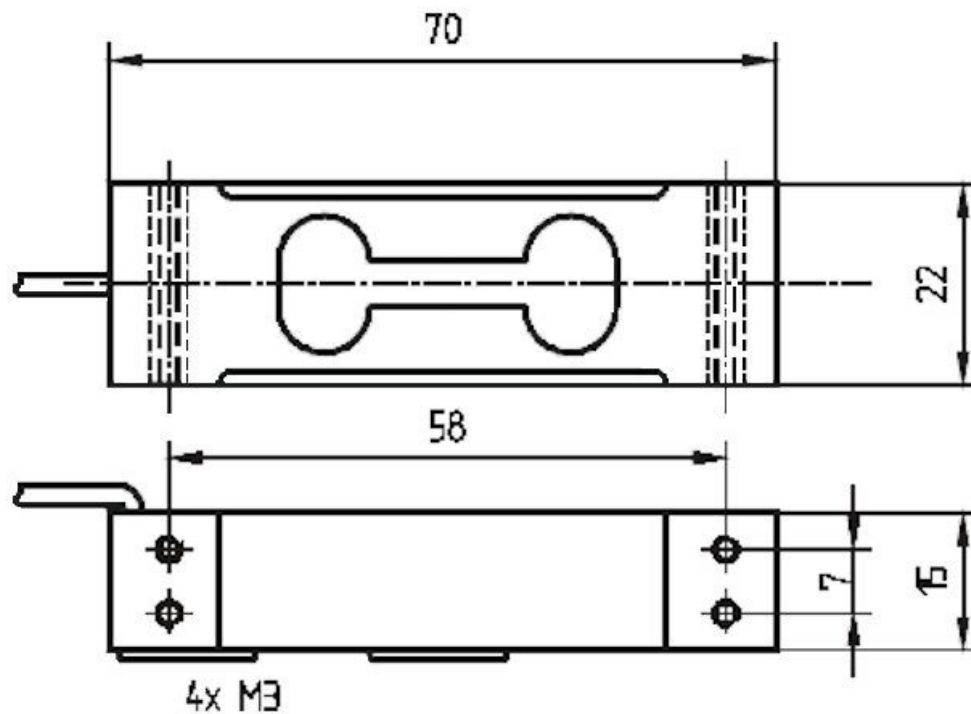


Force Sensor 1006 2kg/G

Item number: 1893



Technical Drawing



Technical Data

| Basic Data | | Unit |
|-----------------|--------------------|------|
| Type | Wägezelle | |
| Force direction | Compression | |
| Rated force Fx | 2 | kg |
| Material | aluminum-alloy | |
| Dimensions | 70mm x 15mm x 22mm | |
| Breaking force | 300 | %Fs |
| Variants | 2kg... 5kg | |

| Electrical Data | | Unit |
|--|-----|------|
| Input resistance | 400 | Ohm |
| Tolerance input resistance | 20 | Ohm |
| Output resistance | 350 | Ohm |
| Tolerance output resistance | 3.5 | Ohm |
| Insulation resistance | 2 | GOhm |
| Rated range of excitation voltage from | 2.5 | V |
| Rated range of excitation voltage to | 5 | V |
| Operating range of excitation voltage from | 1 | V |
| Operating range of excitation voltage to | 10 | V |
| Zero signal | 10 | %Fs |
| Rated output | 2 | mV/V |
| relative error of characteristic value | 0.1 | mV/V |

| Accuracy Data | | Unit |
|---------------|--|------|
|---------------|--|------|

| OIML Accuracy Data | | Unit |
|------------------------------|--------|-----------------------|
| OIML accuracy class | G | |
| Maximum no. of intervals (n) | 3000 | |
| Zero return, 30 min. | 0.017 | ±% of applied load |
| Total error | 0.02 | ±% of rated output |
| Temperature effect on zero | 0.004 | ±% of rated output/°C |
| Temperature effect on output | 0.001 | ±% of load/°C |
| Eccentric loading error | 0.0057 | ±% of rated load/cm |

| Environmental Data | | Unit |
|----------------------------------|------|------|
| Rated temperature range from | -10 | °C |
| Rated temperature range to | 40 | °C |
| Operating temperature range from | -30 | °C |
| Operating temperature range to | 70 | °C |
| Storage temperature range from | -30 | °C |
| Storage temperature range to | 70 | °C |
| Environmental protection | IP66 | |

Abbreviation : RD: „Reading“; FS: „Full Scale“;1) The exact nominal sensitivity is indicated in the test report;2) Nominal output for LCS130 250kg is 0,1%.

Pin Assignment

| Channel | Symbol | Description | Wire color | PIN |
|---------|--------|------------------------|------------|-----|
| | +Us | positive bridge supply | green | |
| | -Us | negative bridge supply | black | |
| | +Ud | positive bridge output | red | |
| | -Ud | negative bridge output | white | |

Shield- transparent.