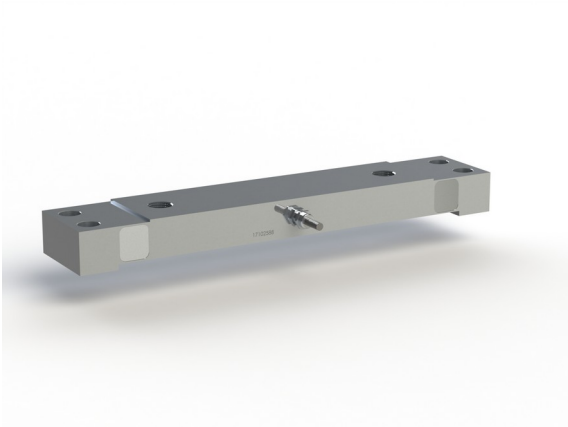
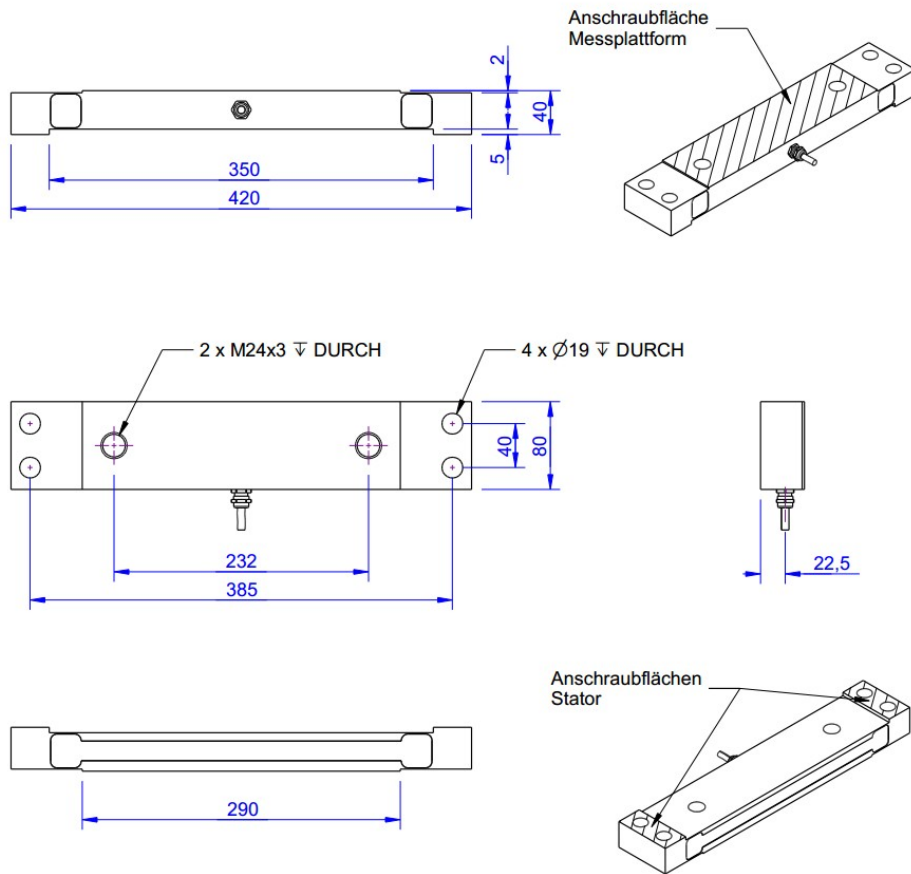


Force Sensor KS420 10kN

Item number: 8705



Technical Drawing



Technical Data

Basic Data		Unit
Type	Kraftsensor	
Force direction	Tension/Compression	
Rated force F _x	10	kN
Force introduction	Internal thread	
Dimension 1	2xM24x3	
Sensor Fastening	Through-hole	
Dimension 2	4xØ19	
Operating force	150	%FS
Rated displacement	0.1	mm
Lateral force limit	50	%FS
Material	tool steel	
Surface	Galvanisch verzinkt	
Dimensions	420mm x 80mm x 40mm	
Height	40	mm
Length or Diameter	420	mm
Variants	10kN... 50kN	

Electrical Data		Unit
Input resistance	200	Ohm
Tolerance input resistance	25	Ohm
Output resistance	350	Ohm
Insulation resistance	2	GOhm
Rated range of excitation voltage from	2.5	V
Rated range of excitation voltage to	5	V
Operating range of excitation voltage from	1	V
Operating range of excitation voltage to	10	V
Zero signal	0.05	mV/V
Rated output	1	mV/V / FS

Accuracy Data		Unit
Accuracy class	0,1	
Relative linearity error	0.1	%FS
Relative zero signal hysteresis	0.1	%FS
Temperature effect on zero signal	0.01	%FS/K
Temperature effect on characteristic value	0.02	%RD/K
Relative creep	0.1	%FS

Environmental Data		Unit
Rated temperature range from	-10	°C
Rated temperature range to	70	°C
Operating temperature range from	-10	°C
Operating temperature range to	85	°C
Storage temperature range from	-10	°C
Storage temperature range to	85	°C
Environmental protection	IP65	

Abbreviation : RD: „Reading“; FS: „Full Scale“;1) The exact nominal sensitivity is indicated in the test report.2) optional: 780 ±80 Ohm Pin Configuration

Pin Assignment

Channel	Symbol	Description	Wire color	PIN
	+Us	positive bridge supply	brown	
	-Us	negative bridge supply	white	
	+Ud	positive bridge output	green	
	-Ud	negative bridge output	yellow	

Screen - transparent. Pressure load: positive output signal